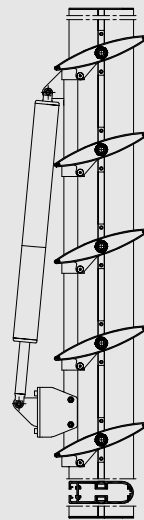
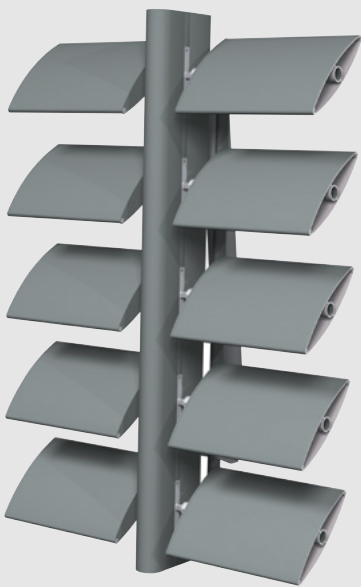




BS 100/30/20

Protection against solar heat



Reynaers' BS (Brise Soleil) systems are designed to provide an aesthetic and efficient shading solution to almost any new and existing building. They are offered both standard or as a bespoke solution. Brise Soleil is the generic term for a system of louvers which, when fitted to the external façade of a building, provides protection against solar heat and glare.

BS 100/30/20

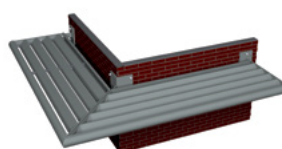
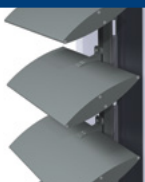


TECHNICAL CHARACTERISTICS

Style variants	BS 100 PRE-ASSEMBLED FRAME	BS 100 FIXED LOUVRE	BS 100 MOVABLE LOUVRE	BS 100 GLASS LOUVRE
Shape louvres	ellipse	ellipse	ellipse	hardened glass
Size louvres	140 mm / 180 mm	from 120 to 400 mm	from 120 to 400 mm	366 x 10/12/14/17 mm
(Fixed) angle	45°	0°/ 15°/ 30°/ 45°/ 60°/ 75°/ 90°	variable	0°/15°/30°/45°/60°/ 75°/90° and variable
Walkway application	yes	yes	yes	yes
Max. dimensions	width 1000 or 1500 mm	project dependent	project dependent	project dependent
Possible automated	no	no	yes	yes

Louvres with size 500 mm and 700 mm are also available for custom solutions.

BS 100/30/20



TECHNICAL CHARACTERISTICS

Style variants	BS 100 LOUVRE GRIP	BS 30 FRAME SYSTEM	BS 20 FRAME SYSTEM
Shape louvres	ellipse	z-shaped	curved
Size louvres	200 mm / 250 mm / 300 mm	90 mm wide x 60 mm high	80 mm / 140 mm wide
(Fixed) angle	0°/ 15° / 30°/ 45°	yes	30°
Walkway application	no	yes	no
Max. dimensions	continuous	3000 x 1000 mm	3000 x 1250 mm
Possible automated	no	no	no



REYNAERS ALUMINIUM NV/SA • www.reynaers.com • info@reynaers.com
02/2012 - 0H0.90C2.00 - Publisher Responsible at Law: E. Fonteyne, Oude Liersebaan 266, B-2570 Duffel

